

Wednesday

13th February
2019

**DATES to
REMEMBER**

25th February
Meet the Teacher

26th February
Whole School
Swimming
Carnival

11th March
Eight Hour Day

For more dates
click on Calendar
at the following
address

www.woodbridgeschool.org.au

Parents
Emergency No.
0427 303 701

Student Absence
Contact No.
6267 4205

WOODBIDGE WORDS



Woodbridge School and Marine Discovery Centre
Phone: 03 6267 4667 Fax 03 6267 4808
Email: woodbridge@education.tas.gov.au
Web: www.woodbridgeschool.org.au

Dear Parents and Carers,

Welcome Back

As we settle into the new school year I would like to congratulate all the children on their efforts so far. Walking around the school and visiting classrooms I have been very impressed with the behaviour, friendliness and care being shown by all students.

School Start and Finishing Time Reminder

Just a brief reminder to all parents that the school start time whereby teachers will be on duty and able to supervise students begins at 8-40 whilst our school finishing time occurs at 3-15.

Swimming Carnival

Our school swimming carnival for Kindergarten to Grade 10 students will be held **Tuesday the 26th of February at Huonville Pool, weather permitting.** Parents please make sure you have signed and returned your child's **swimming consent form** that you would have recently received in your validation packs. More information about this day will be sent out shortly.

Parent Meet the Teacher BBQ

We will be having a Parent Meet the Teacher BBQ on **Monday the 25th of February from 3-30 - 5-00.** I would urge all families to come along and meet your child's teachers and enjoy a sausage or hamburger in the process. This afternoon is a fantastic opportunity for us as a school and staff to touch base with parents and let you know about the great things that will be happening at Woodbridge School this year in a relaxed and informal setting. Information sessions (4-40 – 5-00) on new school communication systems, Maths Pathways Grades 7 & 8 and the NDIS (National Disability Insurance Scheme) will also be occurring.

Validation Forms

Validation forms were sent home to all parents a few weeks ago. It is extremely important that parents read this information carefully and make sure that **ALL** forms are signed and returned to the office asap. This information supports the school on a wide range of matters such as bushfire emergencies, medical information for your child, updated contact details in case of an emergency .etc. Your help in returning these forms in a timely matter would be greatly appreciated. Thank-you if you have already completed this process.

Administration of Medication Authorisation

Please be aware that office staff are unable to administer non-prescribed and prescribed medication to any students without the written and signed consent of a parent / guardian. A medical authorisation form can be obtained from the office on request. For prescription medication an additional form must be completed by the doctor or pharmacist dispensing the medication or a practicing nurse from the prescribing doctor's surgery.

Diaries

This year all secondary students have been given a school diary. It is a student responsibility to bring their diaries to every class and home each night. Parents will be asked to sign their diaries each week along with their Home Group teacher.

Year 7 Camp – Unfortunately the camp has been postponed until later in the term due to the current bushfires. More information to follow.

WOODBIDGE WORDS



2019 Staff List

Below is the list of Woodbridge teaching staff for the beginning of the 2019 school year. We have a fantastic staff team who are more than happy to discuss any concerns that you may have about your child's education. Parent communication is really important to us and is valued by the whole team. We have attached the contact details of all the teachers your child will be working with over the course of the year to help support our parents in making contact with a teacher should the need arise.

Senior Staff

Hamish Cunningham (Principal)

Caroline Randall (Assistant Principal) – Primary Coordinator

Fiona Blaschke (AST) Grade 7 Grade Coordinator & Joint Grade 8 Coordinator

Amy Robinson (AST) Grade 9 Grade Coordinator & Joint Grade 8 Coordinator

Dom Peardon (AST) Grade 10 Grade Coordinator

Georgia Wearne (AST)

Lee Reid (SBM) (School Business Manager)

Support Team

Wendy Canada	Chaplain	Monday/Thursday
Dianna Atkins	Social Worker	Tuesday/Friday
Donna Simpkin	Psychologist	Thursday
Karina Heier	Speech	Tuesday
Katherine Lee	School Health Nurse	Tuesday/Thursday

Teacher Assistants	Office Staff	Education Facility Attendants
Karen Gibbons Jacqui Juvakka Jim Kirkland Beryl Tasherofi Pete Thomas	Kirsty Morgan Kari Taylor Tara Turner	Jackie Cotton Tameka Petteerd Jess Taylor Brett Welling Jess Woolley David Hogermeer Mike Oakley

Library Technician	Lab Technician	Canteen Manager
Kirsty Morgan	Justine Barrett	Rob Morton

Primary Core Teachers

Class	Teacher(s)
Kinder	Kellie Wilton
Prep/One Blue	Lizzie Scales (4 Days) Corinne O'halloran (1 Day)
Prep/One Yellow	Kaitlyn Mulder
Two/Three	Sian Wailes (3 Days) Georgia Wearne (2 Days)
Three/Four	Barbara Bopp
Four/Five	Kate Murphy (4 Days) Andrea Van Emmerick (1 Day)
Five/Six	Matt Woolley

WOODBIDGE WORDS



Primary Specialist Teachers

Subject	Teacher(s)
Literacy Support	Corinne O'Halloran, Lyndel Rawlings
Health and Physical Education	Renee Britton, Mick Crawford
Music	Andrea Van Emmerick
Art	Lyndel Rawlings
German	Kaspar Deane
LIL / Kinder Release	Alex Gill

Secondary Core Subject Teams

English	Emily Bremner, Kate Gabatel, Andrea Flockart
Science	Fiona Blaschke, Bella Burgess- Wilson, Rowan Henderson
Maths	Alex Robinson, Rowan Henderson, Beth Prince
HASS	Jan Moore, Jenni Gourlay, Andrea Flockart
Health and Physical Education	Kaspar Deane, Mick Crawford

Grade 7 and 8 Specialist Teachers

Digital Technology	David Bell
Materials and Design Technology	Dom Peardon
Foods	Cath Earnshaw
Music	Andrea Scott
LOTE (German)	Kaspar Deane
Art, Craft and Design	Roland Gabatel
Digital Art	Olivia Chapman

Grade 8-10 Options

Art, Craft and Design	Roland Gabatel
Media	Roland Gabatel
Drama	Kate Gabatel
Music	Andrea Scott
Maths Methods- Foundation	Alex Robinson
LOTE – German / Creative Writing	Jenni Gourlay
Foods and Catering	Cath Earnshaw
Materials, Design and Technology	Dom Peardon
Digital Technology	David Bell
Sport and Recreation	Dom Peardon
Digital Art /Photography/Graphic Design	Olivia Chapman
Outdoor Education	Dom Peardon
Paddock to Plate	Cath Earnshaw
Science Investigations	Bella Burgess-Wilson
Introduction to Journalism (Magazine)	Cath Earnshaw
REACH	Amy Robinson
Craft and Design Techniques	Fiona Blaschke

Kind Regards
Hamish Cunningham
Principal

TEACHER EMAIL CONTACTS

Class	Teacher	Subject	Email Address
Primary Coordinator		Caroline Randall	caroline.randall@education.tas.gov.au
Kindergarten	Kellie Wilton	Home Group Teacher	kellie.wilton@education.tas.gov.au
	Andrea van Emmerick	Music	andrea.scott@education.tas.gov.au
	Renee Britton	Physical Education	renee.britton@education.tas.gov.au
Prep/I Blue	Lizzie Scales	Home Group teacher (Mon, Wed, Thur, Fri)	lizzie.scales@education.tas.gov.au
	Corinne O'Halloran	Home Group Teacher (Tues) and Literacy Support	corinne.ohalloranl@education.tas.gov.au
	Renee Britton	Physical Education	renee.britton@education.tas.gov.au
	Andrea van Emmerick	Music	andrea.scott@education.tas.gov.au
	Lyndel Rawlings	Art	lyndel.rawlings@education.tas.gov.au
Prep/I Yellow	Kaitlyn Mulder	Home Group teacher	katie.mulder@education.tas.gov.au
	Renee Britton	Physical Education	renee.britton@education.tas.gov.au
	Andrea van Emmerick	Music	andrea.scott@education.tas.gov.au
	Lyndel Rawlings	Art	lyndel.rawlings@education.tas.gov.au
	Corinne O'Halloran	Literacy Support	corinne.ohalloranl@education.tas.gov.au
	Cath Earnshaw	Library	catherine.earnshaw@education.tas.gov.au
Grade 2/3	Sian Wales	Home Group teacher (Mon, Wed, Fri)	sian.l.wailes@education.tas.gov.au
	Georgia Wearne	Home Group teacher (Tues, Thurs)	georgia.wearne@education.tas.gov.au
	Renee Britton	Physical Education	renee.britton@education.tas.gov.au

WOODBIDGE WORDS



	Andrea van Emmerik	Music	andrea.scott@education.tas.gov.au
	Lyndel Rawlings	Art	lyndel.rawlings@education.tas.gov.au
	Kaspar Deane	German	kaspar.deane@education.tas.gov.au
Grade 3/4	Barbara Bopp	Home Group Teacher	barbara.bopp@education.tas.gov.au
	Renee Britton	Physical Education	renee.britton@education.tas.gov.au
	Andrea van Emmerick	Music	andrea.scott@education.tas.gov.au
	Lyndel Rawlings	Art	lyndel.rawlings@education.tas.gov.au
	Kaspar Deane	German	kaspar.deane@education.tas.gov.au
Grade 4/5	Kate Murphy	Home Group teacher (Mon, Tues, Thurs, Fri)	kate.murphy@education.tas.gov.au
	Andrea van Emmerik	Home Group teacher (Wed)	andrea.scott@education.tas.gov.au
	Renee Britton	Physical Education	renee.britton@education.tas.gov.au
	Andrea van Emmerik	Music	andrea.scott@education.tas.gov.au
	Lyndel Rawlings	Art	lyndel.rawlings@education.tas.gov.au
	Kaspar Deane	German	kaspar.deane@education.tas.gov.au
Grade 5/6	Matt Woolley	Home Group teacher	matt.woolley@education.tas.gov.au
	Mick Crawford	Physical Education	michael.crawford@education.tas.gov.au
	Andrea van Emmerik	Music	andrea.scott@education.tas.gov.au
	Lyndel Rawlings	Art	lyndel.rawlings@education.tas.gov.au
	Kaspar Deane	German	kaspar.deane@education.tas.gov.au
Grade 7 Coordinator		Fiona Blaschke	fiona.blaschke@education.tas.gov.au
7Blue	David Bell	Home Group/My Education	david.bell@education.tas.gov.au
	Emily Bremner	English	emily.bremner@education.tas.gov.au

WOODBIDGE WORDS



	Beth Prince	Maths	beth.prince@education.tas.gov.au
	Fiona Blaschke	Science	fiona.blaschke@education.tas.gov.au
	Jenni Gourlay	HASS	jenni.gourlay@education.tas.gov.au
	Mick Crawford	HPE	michael.crawford@education.tas.gov.au
	Roland Gabatel	Art	roland.gabatel@education.tas.gov.au
	Cath Earnshaw	Foods	catherine.earnshaw@education.tas.gov.au
	David Bell	Digital Technology	david.bell@education.tas.gov.au
	Dom Peardon	Design Technology	dom.peardon@education.tas.gov.au
	Kaspar Deane	German	kaspar.deane@education.tas.gov.au
7White	Fiona Blaschke	Home Group/My Education	fiona.blaschke@education.tas.gov.au
	Emily Bremner	English	emily.bremner@education.tas.gov.au
	Beth Prince	Maths	beth.prince@education.tas.gov.au
	Fiona Blaschke	Science	fiona.blaschke@education.tas.gov.au
	Jenni Gourlay	HASS	jenni.gourlay@education.tas.gov.au
	Mick Crawford	HPE	michael.crawford@education.tas.gov.au
	Roland Gabatel	Art	roland.gabatel@education.tas.gov.au
	Cath Earnshaw	Foods	catherine.earnshaw@education.tas.gov.au
	Andrea van Emmerik	Music	andrea.scott@education.tas.gov.au
	Olivia Chapman	Digital Art	olivia.chapman@education.tas.gov.au
	David Bell	Digital Technologies	david.bell@education.tas.gov.au
	Grade 8 Coordinators		Fiona Blaschke Amy Robinson
8Blue	Amy Robinson	Home Group/My Education	amy.robinson@education.tas.gov.au
	Andrea Flockart	English/HASS	andrea.flockart@education.tas.gov.au
	Rowan Henderson	Maths/Science	rowan.henderson1@education.tas.gov

WOODBIDGE WORDS



	Mick Crawford	HPE	michael.crawford@education.tas.gov.au
	Roland Gabatel	Art	roland.gabatel@education.tas.gov.au
	Cath Earnshaw	Foods	catherine.earnshaw@education.tas.gov.au
	Dom Peardon	Design Technology	dom.peardon@education.tas.gov.au
	Kaspar Deane	German	kaspar.deane@education.tas.gov.au
	David Bell	Digital Technologies	david.bell@education.tas.gov.au
8White	Bella Burgess-Wilson	Home Group/My Education	bella.burgess-wilson@education.tas.gov.au
	Andrea Flockart	English/HASS	andrea.flockart@education.tas.gov.au
	Rowan Henderson	Maths/Science	rowan.henderson1@education.tas.gov
	Mick Crawford	HPE	michael.crawford@education.tas.gov.au
	Roland Gabatel	Art	roland.gabatel@education.tas.gov.au
	Cath Earnshaw	Foods	catherine.earnshaw@education.tas.gov.au
	David Bell	Digital Technologies	david.bell@education.tas.gov.au
	Andrea van Emmerik	Music	andrea.scott@education.tas.gov.au
	Olivia Chapman	Digital Art	olivia.chapman@education.tas.gov.au
Grade 9 Coordinator	Amy Robinson		amy.robinson@education.tas.gov.au
Grade 9Blue (CORE)	Emily Bremner	Home Group/Work Studies & English	emily.bremner@education.tas.gov.au
	Rowan Henderson	Maths	rowan.henderson1@education.tas.gov
	Bella Burgess-Wilson	Science	bella.burgess-wilson@education.tas.gov.au
	Jane Moore	History/Geography	janita.moore@education.tas.gov.au
	Mick Crawford	HPE	michael.crawford@education.tas.gov.au

WOODBIDGE WORDS



Grade 9 White (CORE)	Kaspar Deane	Home Group/Work Studies & HPE	kaspar.deane@education.tas.gov.au
	Emily Bremner	English	emily.bremner@education.tas.gov.au
	Alex Robinson	Maths	alex.robinson@education.tas.gov.au
	Bella Burgess-Wilson	Science	bella.burgess-wilson@education.tas.gov.au
	Jan Moore	History/Geography	janita.moore@education.tas.gov.au
Grade 10 Coordinator		Dom Peardon	dom.peardon@education.tas.gov.au
Grade 10 Blue (CORE)	Dom Peardon	Home Group/Work Studies	dom.peardon@education.tas.gov.au
	Kate Gabatel	English	kate.gabatel@education.tas.gov.au
	Alex Robinson	Maths	alex.robinson@education.tas.gov.au
	Bella Burgess-Wilson	Science	bella.burgess-wilson@education.tas.gov.au
	Jenni Gourlay	History/Geography	jenni.gourlay@education.tas.gov.au
	Kaspar Deane	HPE	kaspar.deane@education.tas.gov.au
Grade 10 White (CORE)	Kate Gabatel	Home Group/Work Studies	kate.gabatel@education.tas.gov.au
	Jan Moore	Home Group/Work Studies	janita.moore@education.tas.gov.au
	Kate Gabatel	English	kate.gabatel@education.tas.gov.au
	Alex Robinson	Maths	alex.robinson@education.tas.gov.au
	Bella Burgess-Wilson	Science	bella.burgess-wilson@education.tas.gov.au
	Jan Moore	History/Geography	janita.moore@education.tas.gov.au
	Kaspar Deane	HPE	kaspar.deane@education.tas.gov.au
Grade 9/10 Options Teachers			
Bella Burgess-Wilson		Science Investigation	bella.burgess-wilson@education.tas.gov.au
Fiona Blaschke		Craft	fiona.blaschke@education.tas.gov.au
Dom Peardon		Outdoor Education, Sport	dom.peardon@education.tas.gov.au

	&Recreation, Design Technology	
Andrea van Emmerik	Music	andrea.scott@education.tas.gov.au
Amy Robinson	Reach	amy.robinson@education.tas.gov.au
Olivia Chapman	Digital Art, Graphic Design	olivia.chapman@education.tas.gov.au
Roland Gabatel	Media, Art	roland.gabatel@education.tas.gov.au
Cath Earnshaw	Foods, Paddock to Plate, School Magazine	catherine.earnshaw@education.tas.gov.au
Alex Robinson	Maths Methods	alex.robinson@education.tas.gov.au
Kate Gabatel	Drama	kate.gabatel@education.tas.gov.au
Jenni Gourlay	German, Creative Writing	jenni.gourlay@education.tas.gov.au
David Bell	Digital Technology	david.bell@education.tas.gov.au

ORAL HEALTH SERVICES TASMANIA



A FREE Fissure Sealant and Fluoride Varnish Program is coming to your school!

If your child is around 6 or 12 years of age they will be invited to take part in a program to help prevent tooth decay.

Sealants protect the chewing surface of the back adult teeth



Fluoride varnish protects the smooth surfaces

Your child will receive an invitation to take part in the program. This will provide more information about fissure sealants and fluoride varnish applications.

If you have any questions or concerns please contact Oral Health Services Tasmania on 1300 011 013.

CHS:FLB-023-11/1/2015

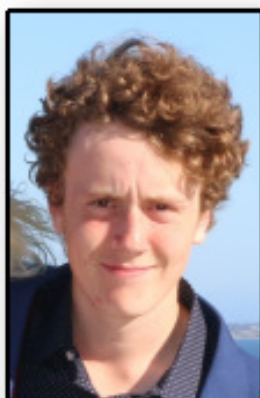
Oral Health Services Tasmania

TASMANIAN HEALTH SERVICE



MEANWHILE AT WOODBRIDGE SCHOOL...

Mr Cunningham visited the Grade 2/3 class last week and worked with Tasmin, Freya and Shakyla to construct the cool wooden plane.



2018 Grade 10 student Sam Beede has been selected to represent the Australian Foosball (Table Soccer) Team at the 2019 World cup in Spain. Well Done Sam!



At the end of last year a large macrocarpa tree that has been part of the school landscape for many years unfortunately came down. Woodbridge local Chris Bowker was able to mill the tree (along with poplars from Silverwater Park that were cleared by the council). This timber will be stored ready for use in the schools Design and Technology classes.





Healthy headspace Skills workshop



**A SKILLS-BASED WORKSHOP DESIGNED TO PROVIDE YOU
WITH THE TOOLS TO MAINTAIN YOUR WELLBEING**

WHO: young people between 12 & 25 years. Parents & carers welcome.

WHEN: Tuesday evenings from 5.30 to 6.30pm

WHERE: The Link, Hobart 57 Liverpool St (up the driveway)

THE PROGRAM

FEBRUARY 19 TH	Sleeping Well
FEBRUARY 26 TH	Physical Wellbeing
MARCH 5 TH	Communicating with Confidence
MARCH 12 TH	Mindfulness and Relaxation
MARCH 19 TH	Understanding & Accepting Myself
MARCH 26 TH	Understanding My Anger
APRIL 2 ND	Understanding My Feelings
APRIL 9 TH	Healthy Thinking

WORKSHOPS INCLUDE -

Education on maintaining positive wellbeing
Discussion and activities on a range of topics
Take home booklet and resources

**IT'S A DROP IN PROGRAM - NO NEED TO COME EVERY
WEEK - COME FOR ONE OR AS MANY AS YOU LIKE**
Please phone 6231 2927 to RSVP

WOODBIDGE WORDS



Kinder to Grade 10 – Eat and Greet - Monday 25th February 3:30pm – 5:00pm

Come along and meet your child's teacher and learn about the exciting learning opportunities we will be offering throughout 2019

- 3:30 – 3:40 Parents and staff meet in the Gym.
Principal's welcome.
- 3:40 – 4:05 **School Tour – All families**
There is an option for parents and carers to do a tour of the school if they wish and see our amazing teaching and learning facilities.
- 4:05 onwards **FREE BBQ and Meeting of Teachers**
Parents meet with primary and secondary teachers informally. All teachers have brochures about class programs and would like to share information with parents about their plans for 2019.
- 4:40 – 5:00 **Parent information Sessions – C Block**
Grade 7&8 Maths Pathways – with Amy Robinson
Parent/Teacher Communication – with Dom Peardon
NDIS Local Area Co-ordinator - with Mirjam Holthuis



Come and hear about the learning opportunities that will be provided for your child in 2019.

Meet our wonderful staff and enjoy a free BBQ.

WOODBRIDGE WORDS



Do you play, or want to play one of these instruments?

Flute, Oboe, Clarinet, Saxophone, Trumpet, French horn, Trombone, Baritone, Tuba, Bass, Drums

The Woodbridge and Channel Community Concert Band Wants You!!

We rehearse on Fridays during the school term from 3:30 to 4:30 in the Performing arts room at Woodbridge School. We play lots of good music and it is heaps of fun. Absolute beginners are more than welcome. Playing in a concert band is

a great way to get better at your instrument and we are always looking for new players, so we hope that you can come along and **JOIN US!!** Ring Malcolm Martin on 0459 041 762 or Email him on malcolmm73@yahoo.com for any enquiries. We hope to see you soon.



Breakfast Club – Volunteers URGENTLY Needed for Tuesday’s and Friday’s
If you are interested in volunteering you will require a Working With Vulnerable Children’s card. Breakfast club is from 8.30 to 9.15 each morning. Please call and leave your name with the office.

CONTACT DETAILS

3509 Channel Highway,
Woodbridge, Tasmania 7162
Ph. (03) 6267 4667 Fax (03)62674808
Email woodbridge@education.tas.gov.au
Web www.woodbridgeschool.org.au